

**ALL SS PRESSURE GAUGE
BOURDON TYPE**

SPECIAL FEATURES

EXTERNAL ZERO ADJUSTMENT (OPTIONAL)
 STAINLESS STEEL CASE & MEASURING SYSTEM
 SOCKET DIRECTLY WELDED TO CASE
 DRY AND LIQUID FILLED VERSION
 STANDARD FOLLOWED IN GENERAL EN 837-1 (FOR NS 100, 150 & 250 mm).

APPLICATIONS

FOOD & BEVERAGE, PHARMACEUTICAL, CRYOGENICS, CHEMICAL & PETROCHEMICAL INDUSTRIES, CONVENTIONAL & NUCLEAR POWER PLANTS, PUMPS, HYDRO-CLEANING MACHINES, PRESSES, ENGINE COMPRESSORS, TURBINES, DIESEL ENGINES & REFRIGERATING PLANTS. SUITABLE FOR CORROSIVE ENVIRONMENTS & GASEOUS OR LIQUID MEDIA THAT WILL NOT OBSTRUCT THE PRESSURE SYSTEM.

STANDARD VERSION
NOMINAL SIZE : 63,100,150,250mm

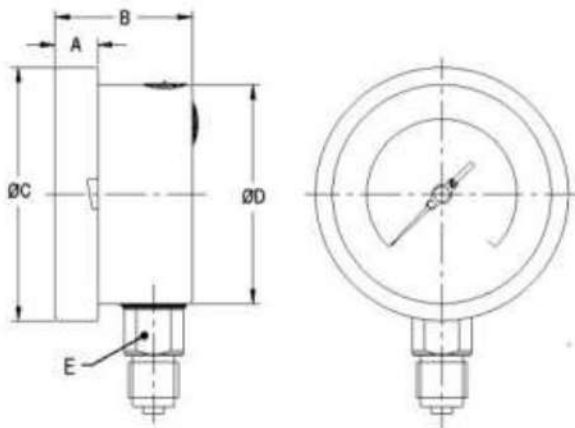
Accuracy class : 1,6 (63,80mm), 1.0 (100,150, 250 mm)

Scale ranges : 0...0,6 to 0...1600 bar

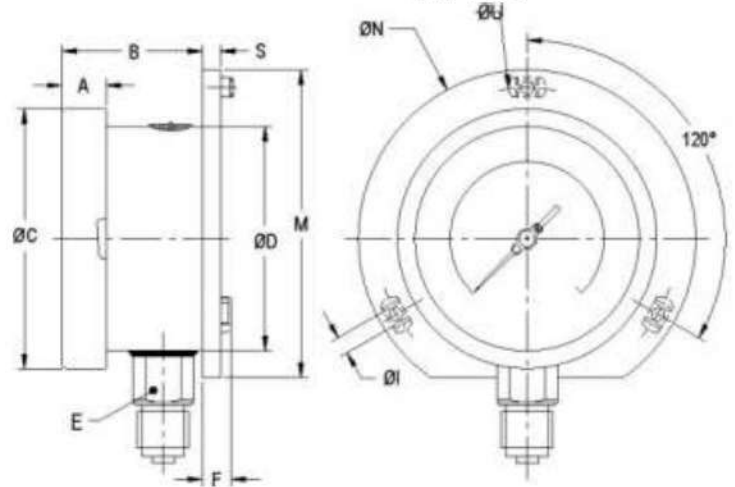
Ambient temperature	- 40°C to + 60°C
Process temperature	Max 200°C
Operating pressure range	75% of Full scale value
Temperature effect	When temperature of the measuring system deviates from reference temperature (+20°C) max error $\pm 0,4\%$ /10K of true scale value
Over pressure limit	≤ 100 bar : 125% of Max. scale value > 100 to ≤ 600 bar : 115% of Max. scale value > 600 to ≤ 1600 bar : 110% of Max. scale value
Case	AISI 304 SS [With filling plug of neoprene on top to be used also to vent case before use for range ≤ 16 bar]
Ring	AISI 304 SS, Bayonet type
Socket	AISI 316L SS (Directly welded to case)
Bourdon	AISI 316L SS [< 100 bar : C – type; ≥ 100 bar : Helical type]
Movement	AISI 304 SS [with over and underload stop; free zero]
Joints	Tig argon arc welding
Protection	IP 65 [IP 65 – EN 60 529 / IEC 529]
Dial	Aluminium, black graduation on white background, dial arc 270 °C
Pointer	Aluminium, black coloured micrometer zero adjustable
Window	Safety glass
Gasket	Neoprene rubber
Blow out	Neoprene rubber

GLYCERINE FILLED VERSION

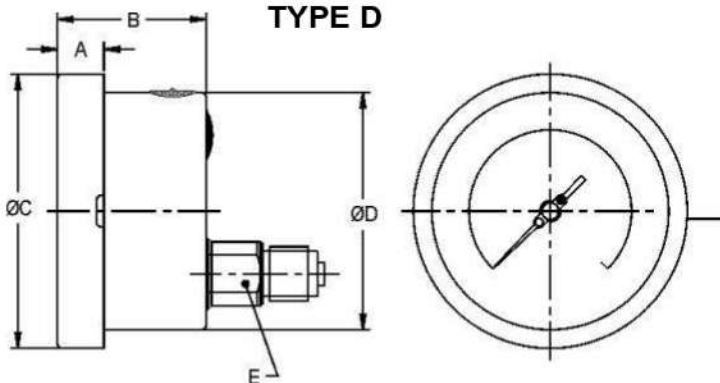
Ambient temperature	Maximum 65°C
Process temperature	+15 °C / 100°C maximum
Blow out	Plexi glass
Dampening liquids	Glycerine 98% (others available as option)
Other features	Refer specification of standard version

DIMENSIONS - STANDARD VERSION
TYPE A


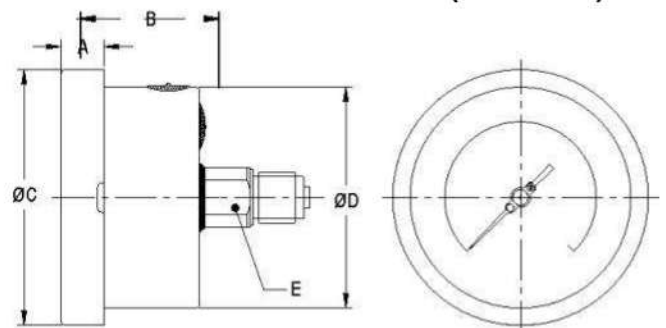
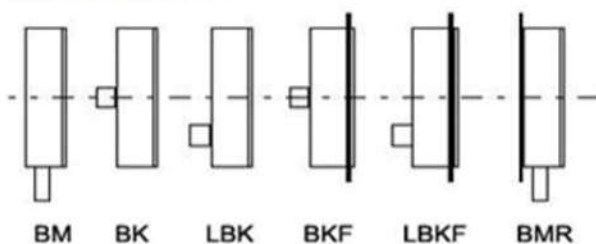
NS	A	B	ØC	ØD	E	Weight in gram (With Box)
100	12.5	48	111	100	22	640.0
150	15	49	161	149	22	1020.0
250	14.5	49.5	263	250	22	2000.0

TYPE C


NS	A	B	ØC	ØD	E	M	S	F	ØI	ØN	ØU	Weight in gram (With Box)
100	12.5	48	111	100	22	128	6	14.5	6	134	118	720.0
150	15	49	161	149	22	174.5	6	14.5	6	186	168	1160.0
250	14.5	49.5	263	250	22	286.5	1.5	14.5	7	290	276	2400.0

TYPE D


NS	A	B	ØC	ØD	E	Weight in gram (With Box)
100	12.5	48	111	100	22	640.0
150	15	49	161	149	22	1000.0
250	14.5	49.5	263	250	22	1800.0

TYPE D (63/80mm)

MOUNTING TYPE


- BM** - Bottom Connection
- BK** - Centre Back Connection
- LBK** - Off Centre Back Connection
- BKF** - Centre Back Connection with Front Flange (Panel Mounting)
- LBKF** - Off Centre Back Connection with Front Flange (Panel Mounting)
- BMR** - Bottom Connection Back Flange (Surface Mounting)

Notes : • Drawings are not to scale. • All Dimensions are in mm. • NS = Nominal Size.