



SPECIAL FEATURES

COST EFFECTIVE
 DRY OR LIQUID FILLED
 STANDARD FOLLOWED IN GENERAL EN 837-1

APPLICATIONS

PNEUMATICS, HYDRAULICS, PUMPS, COMPRESSORS,
 DIESEL ENGINES AND GASEOUS / LIQUID MEDIA THAT
 WILL NOT OBSTRUCT THE PRESSURE SYSTEM.

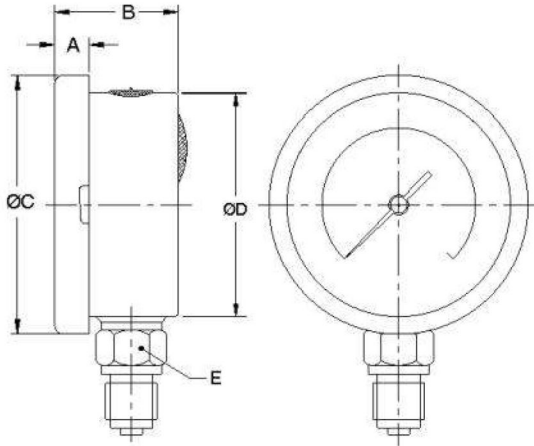
STANDARD VERSION

NOMINAL SIZE :63,80,100&150MM

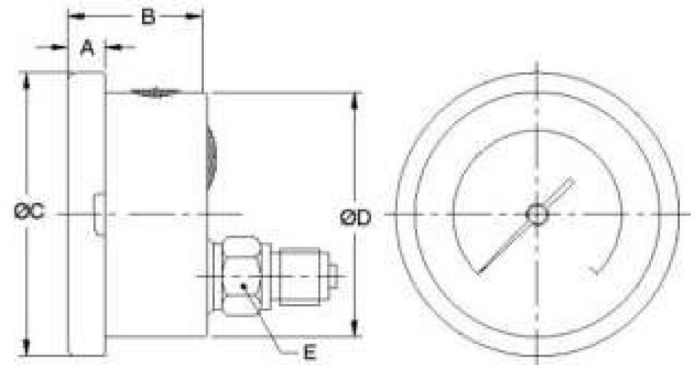
Accuracy class	1,6 (63,80mm), 1.0 (100,150mm)
Ambient temperature	- 20°C to + 65°C
Process temperature	Max. 120°C
Operating pressure range	75% of scale value
Over pressure limit	≤ 100 bar : 125% of Max. scale value > 100 to ≤ 600 bar : 115% of Max. scale value
Case & Bezel	AISI 304 SS (Bayonet type)
Bourdon	Copper alloy up to 70 kg/cm ² AISI 316L SS for 100 kg/cm ² & above
Socket	Copper alloy
Movement	Copper alloy
Joints	Alloy brazing / soldering
Protection	IP 65
Dial	Aluminium, black graduation on white background
Pointer	Aluminium, black coloured fixed
Window	Plexi glass
Filling plug	Neoprene
Gasket	Neoprene
Blow off disc	Neoprene

DRY BUT FILLABLE VERSION

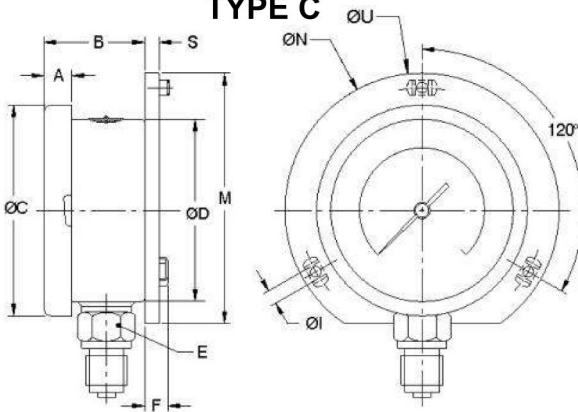
Fillable dampening liquid	Glycerine 98%
Process temperature	Maximum 65°C
Other features	Refer specification of standard version

DIMENSIONS - STANDARD VERSION
TYPE A

BAYONET TYPE

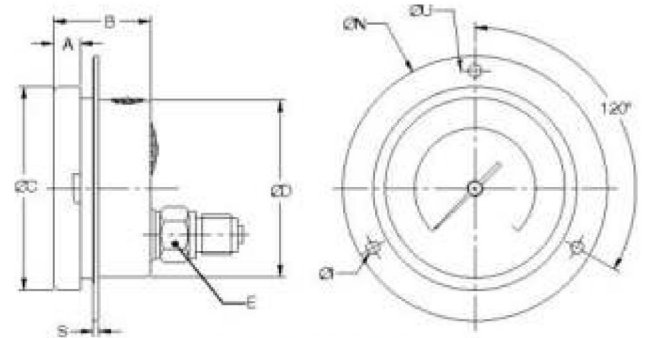
NS	A	B	ØC	ØD	E	Weight in gram (With Box)
100	12.5	48	111	100	22	620.0
150	15	49	161	149	22	980.0

TYPE D

BAYONET TYPE

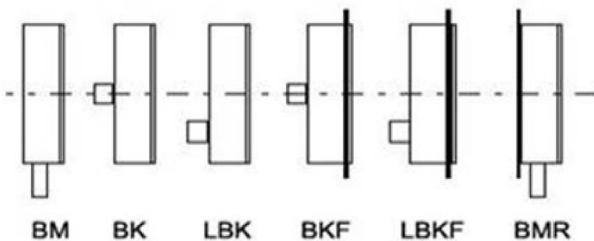
NS	A	B	ØC	ØD	E	Weight in gram (With Box)
100	12.5	48	111	100	22	625.0
150	15	49	161	149	22	970.0

TYPE C

BAYONET TYPE

NS	A	B	ØC	ØD	E	M	S	F	ØI	ØN	ØU	Weight in gram (With Box)
100	12.5	48	111	100	22	128	6	14.5	6	134	118	700.0
150	15	49	161	149	22	174.5	6	14.5	6	186	168	1140.0

TYPE E

BAYONET TYPE

NS	A	B	ØC	ØD	E	S	ØI	ØN	ØU	Weight in gram (With Box)
100	12.5	48	111	100	22	1	6	134	118	710.0
150	15	49	161	149	22	1	6	186	168	1160.0

MOUNTING TYPE


- BM** - Bottom Connection
- BK** - Centre Back Connection
- LBK** - Off Centre Back Connection
- BKF** - Centre Back Connection with Front Flange (Panel Mounting)
- LBKF** - Off Centre Back Connection with Front Flange (Panel Mounting)
- BMR** - Bottom Connection Back Flange (Surface Mounting)

Notes : • Drawings are not to scale. • All Dimensions are in mm. • NS = Nominal Size.