



### SPECIAL FEATURES

ECONOMICAL VERSION  
GENERAL PURPOSE APPLICATION

### APPLICATIONS

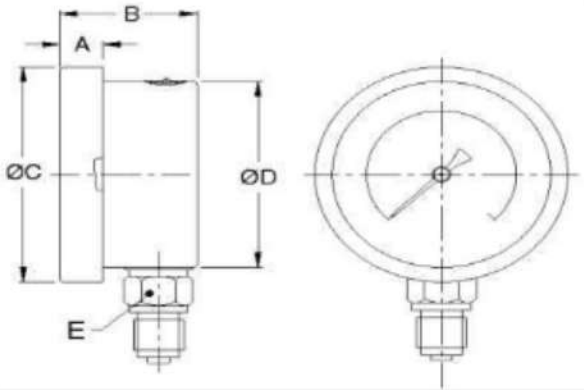
F. R. L. UNITS, WATER, AIR, HYDRAULIC, PNEUMATICS,  
VALVE POSITIONER, SUGAR MILLS & ALLIED PROCESS  
INDUSTRIES.

### STANDARD VERSION

**NOMINAL SIZE :** 40 mm (Model: CC-1-21)  
50,63 mm (Model: CC-1)  
100,150,250mm (Model: CC-2)

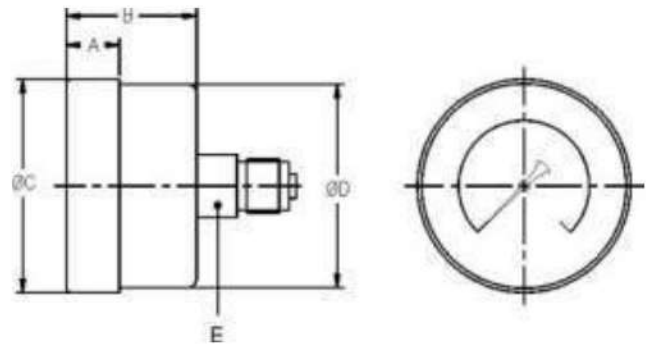
Accuracy class	1,6 (For NS 63, 80, 100, 150 & 250 mm) 2.5 (For NS 40 & 50 mm)
Ambient temperature	- 20°C to + 65°C
Process temperature	Max. 120°C
Operating pressure range	75% of Scale value
Over pressure limit	≤ 100 bar : 125% of max. scale value > 100 to ≤ 600 bar : 115% of max. scale value > 600 to ≤ 1600 bar : 110% of max. scale value
Case & Bezel	Steel, powder coated / painted (Push fit type)
Socket	Copper alloy
Bourdon	Copper alloy up to 280 kg/cm <sup>2</sup> AISI 316L SS for above 280 kg/cm <sup>2</sup>
Movement	Copper alloy
Joints	Alloy brazing / soldering
Dial	Aluminium, black graduation on white background
Pointer	Black coloured, fixed.
Window	Sheet glass

**TYPE - A**



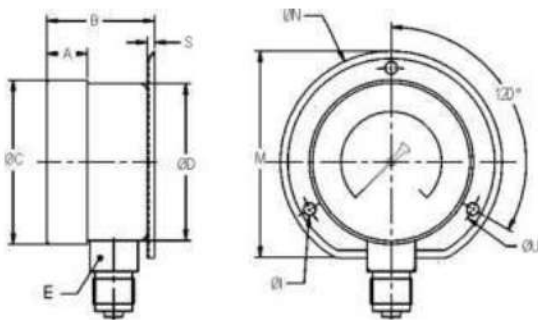
NS	A	B	ØC	ØD	E	Weight in gram (With Box)
40	10	26.5	44	42	12	81.5
50	10	29	53	52	14	101.0
63	12	29	63	62	14	120.0
80	12	35	78	76	14	195.0
100	13	35	99	97	17	343.0
150	16	43	155	154	17	695.0
250	37.5	51	252	249	22	1580.0

**TYPE - D**



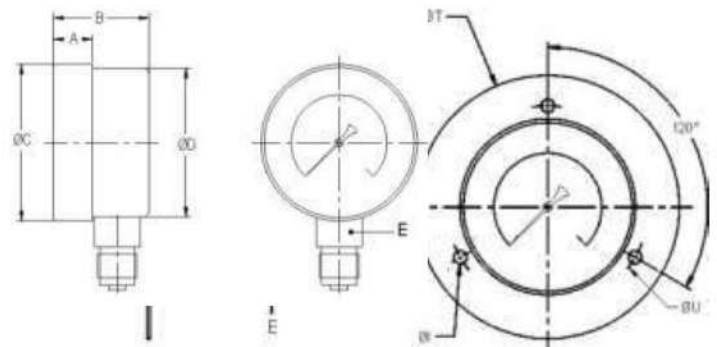
NS	A	B	ØC	ØD	E	Weight in gram (With Box)
40	7	24	42	41	11	69.0
50	11	29	54	52	14	148.0
63	12	29.5	67	65.5	14	174.0
80	12	35	78	76	14	190.0
100	13	36	99	97	17	343.0
150	16	43	155	154	17	662.5
250	37.5	55	252	249	22	2150

**TYPE - C**



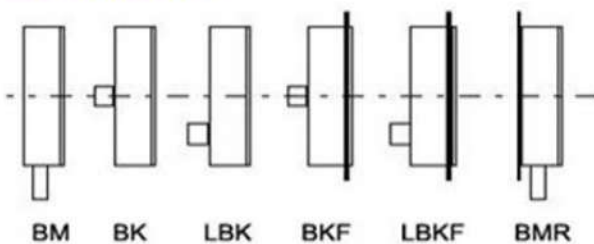
NS	A	B	ØC	ØD	E	M	S	ØN	ØU	ØI	Weight in gram (With Box)
63	12	30	63	62	14	80	5	88	76	5	160.0
80	12	40	78	76	14	100	5	115	98	5	250.0
100	13	36	99	97	17	117	1.2	132	118	6	405.5
150	16	47.5	155	154	17	181	7	195.5	-	-	729.5
250	37.5	55	252	249	22	280	8	288.5	-	-	2300

**TYPE - E**



NS	A	B	ØC	ØD	E	ØT	ØU	ØI	Weight in gram (With Box)
63	12	31	63	62	14	90	76	4	210.0
100	14	33	99	97	17	134	117	4	444.5
150	16	37	155	154	17	184	170	5	581.0

**MOUNTING TYPE**



- BM** - Bottom Connection
- BK** - Centre Back Connection
- LBK** - Off Centre Back Connection
- BKF** - Centre Back Connection with Front Flange (Panel Mounting)
- LBKF** - Off Centre Back Connection with Front Flange (Panel Mounting)
- BMR** - Bottom Connection Back Flange (Surface Mounting)

Notes : • Drawings are not to scale. • All Dimensions are in mm. • NS = Nominal Size.